

CONSTRUCTION HEATERS

F-150 HEAT CANNON



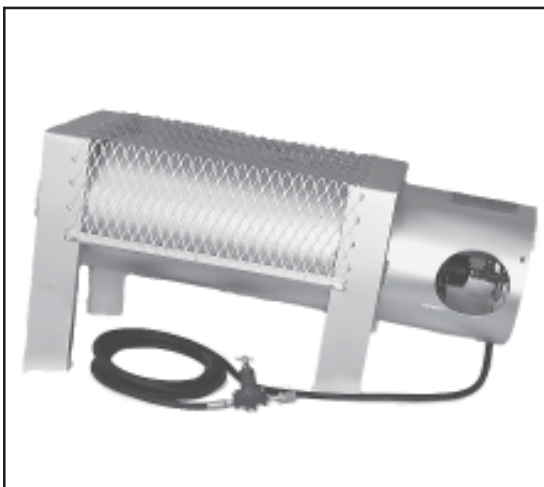
SPECIFICATIONS

MODEL	-	F-150
FUEL	-	Vapour propane
INPUT Maximum	-	150,000 BTU/HR
Minimum	-	50,000 BTU/HR
MANIFOLD PRESSURE	-	2 1/4 to 20 PSIG
HOSE LENGTH	-	20 feet is standard
REGULATOR WITH POL	-	Adjustable to 20 PSI max.
APPROVED	-	Underwriters' Laboratories of Canada Listed
WEIGHT	-	32 LBS
OVERALL DIMENSIONS	-	30" Length 11-1/4" Width 14" Height
AIR OUTLET	-	8" Diameter
FUEL CONSUMPTION	-	2.3 to 6.9 LBS/HR
IGNITION	-	Manual

Temporary heat for use during construction and maintenance

- ▶ Adjustable heat from 50,000 to 150,000 BTU/HR
- ▶ The most compact heater ever produced by Flagro
- ▶ Engineered for simple operation and minimal service
- ▶ Light and highly portable
- ▶ Stackable for transportation and storage (saving costly storage space)
- ▶ Rugged to withstand the rough and tough applications
- ▶ Designed to operate without a fan or electricity
- ▶ Safe, each unit factory tested and equipped with a gas valve which closes automatically on flame failure

F-375 HEAT CANNON



SPECIFICATIONS

MODEL	-	F-375
FUEL	-	Vapour propane
INPUT Maximum	-	375,000 BTU/HR
Minimum	-	220,000 BTU/HR
MANIFOLD PRESSURE	-	7 to 20 PSIG
HOSE LENGTH	-	20 feet is standard
APPROVED	-	Underwriters' Laboratories of Canada Listed
WEIGHT	-	65 LBS
OVERALL DIMENSIONS	-	42" Length 17" Width 22" height
AIR OUTLET	-	13" Diameter
FUEL CONSUMPTION	-	10.1 to 17.3 LBS/HR
IGNITION	-	Manual
OPTIONAL FAN (B-375)	-	800 CFM fan assembly

Temporary heat for use during construction and maintenance

- ▶ Adjustable heat from 220,000 to 375,000 BTU/HR
- ▶ Engineered for simple operation and minimal service
- ▶ Portable heat for the big jobs
- ▶ Stackable for transportation and storage (saving costly storage space)
- ▶ Rugged to withstand the rough and tough applications
- ▶ Safe, each unit factory tested and equipped with a gas valve which closes automatically on flame failure
- ▶ Designed to operate without electricity
- ▶ Optional fan available, 120V service required